

## A Perfect Harmony Between Operators, Superintendents & Management!

1

### Setup

Superintendent sets up readings for collection (as well as compliance thresholds).



2

### Collect

Operators collect readings and samples at scheduled facilities.



3

### Synchronize

Operators dock their Tablet PCs and synchronize. All collected data is available for authenticated users.



4

### Present

Management can run reports and present results internally and to the Ministry.



Canvass is a mobile field data collection and reporting system for regional water and wastewater operations. Canvass seamlessly connects mobile operators to management, compliance, and billing.

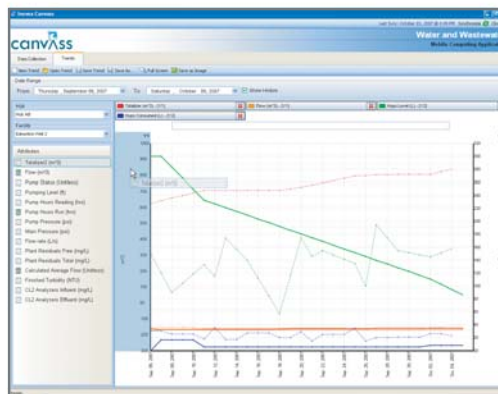
<http://canvass.inovex.ca>

## Operators

- ✓ Meter rollover detection
- ✓ Meter replacements
- ✓ Chemical cylinder change detection
- ✓ Flag readings for review
- ✓ Sample collection
- ✓ Compliance indicators (flow and chemical)
- ✓ Short-term data history at your fingertips
- ✓ Calculations (i.e. dosages, daily flow)
- ✓ Note recording
- ✓ Detailed user and timestamp auditing
- ✓ Create line and scatter plots
- ✓ Drag-and-drop data points onto axes for instant trending
- ✓ Export trends to multiple formats (i.e. JPG, PDF)
- ✓ Show historical and current data on the same trend

## Superintendents

- ✓ Setup facilities and data attributes
- ✓ Specify compliance thresholds
- ✓ Setup data for collection on certain days of the week/month/year
- ✓ Setup data point groupings
- ✓ User and roles administration (links to Active Directory)
- ✓ Pre-populate drop down lists for operators



## Management

- ✓ Chain of Custody Reports
- ✓ Sample Collection Reports
- ✓ Flow Reports (Daily, Monthly, Yearly)
- ✓ Chemical Consumption Reports
- ✓ Billing Reports
- ✓ Compliance Reports
- ✓ Data Audit Reports
- ✓ Operator Time-In/Time-Out Reports
- ✓ Build your own daily & summary reports
- ✓ Build your own trends
- ✓ Export to PDF, Excel, and more...

